

LED UV Lamps



Salient Features :

- Ergonomically Designed Robust Aluminium Housing
- Switchable between UV & White Light*
- Instant on/off, No Warm-Up Time For Full Intensity
- LED's Life upto (40,000 Hrs)
- Mechanical Passive Cooling System
- Even Beam Profile Without Hotspots
- UVA Pass Filter
- Rechargeable Li-Ion Battery Pack
- One Year Standard Warranty.



**INSTANT ON/OFF
OPERATION**
No warm-up time
for full intensity



LED
LED's Life upto
(40,000 Hrs)



SAFER
Robust
aluminium design



COOLING SYSTEM
Mechanical Passive
Cooling System

The UVA lamp series is a Hand-Held UV lamp used for fluorescent non-destructive testing applications like fluorescent penetrant testing and fluorescent magnetic particle inspections. The features includes a switch from AC to Battery operated, UVA pass filter, custom-designed optics which provides intense even spread of UVA, to easily identify indications and long-lasting LED'S life with no warmup time at full intensity. The UVA lamp series is certified as per NDT standards ASTM E1444 and ASTM E3022.

UVA-100/UVA-100 AC

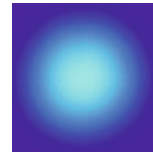


Technical Specifications

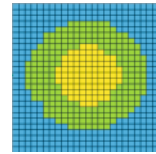
Light Source	: 2 UVA LED
Max UV-A Intensity with filter at a distance of 38cm(15")	: 5000 $\mu\text{W}/\text{cm}^2$
White Light Emission in UV mode	: <10 Lux (0.92 fc)
Wavelength (Peak)	: 365 nm \pm 5 nm
Max Beam Coverage Area	: \varnothing 150mm (\varnothing 6")
Power Requirement	: 100V - 240V, 50-60Hz
Battery Run Time#	: 6-7 Hours
Battery Charge Time#	: 2.5 Hours
Housing Material	: Powder Coated Aluminium
Housing Dimension(LXD)	: 220x \varnothing 110 (8.6"x \varnothing 4.3")
Approximate Weight	
• (Battery Model)	: 1.98lbs (0.90Kg)
• (AC Mains)	: 1.87lbs (0.85Kg)
Power Rating	: 4 watt
IP Rating	: 63

Beam Irradiance Pattern & Profile

- Blue <200 $\mu\text{W}/\text{cm}^2$
- Green 200 - 1000 $\mu\text{W}/\text{cm}^2$
- Yellow 1000 - 5000 $\mu\text{W}/\text{cm}^2$
- Red 5000 - 10000 $\mu\text{W}/\text{cm}^2$
- White > 10000 $\mu\text{W}/\text{cm}^2$



2 - LED Array at 15"



UVA 100

UVA-100D/UVA-100D AC



Technical Specifications

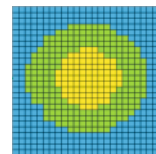
Light Source	: 2 UVA LED+1 White LED
Max UV-A Intensity with filter at a distance of 38cm(15")	: 5000 $\mu\text{W}/\text{cm}^2$
White Light Intensity	: >3500 Lux/>325 ft-candle
White Light Emission in UV mode	: <10 Lux (0.92 fc)
Wavelength (Peak)	: 365 nm \pm 5 nm
Max Beam Coverage Area	: \varnothing 150mm (\varnothing 6")
Power Requirement	: 100V - 240V, 50-60Hz
Battery Run Time#	: 6-7 Hours
Battery Charge Time#	: 2.5 Hours
Housing Material	: Powder Coated Aluminium
Housing Dimension(LXD)	: 220x \varnothing 110 (8.6"x \varnothing 4.3")
Approximate Weight	
• (Battery Model)	: 2.09lbs (0.95Kg)
• (AC Mains)	: 1.98lbs (0.90Kg)
Power Rating	: 4 watt
IP Rating	: 63

Beam Irradiance Pattern & Profile

- Blue <200 $\mu\text{W}/\text{cm}^2$
- Green 200 - 1000 $\mu\text{W}/\text{cm}^2$
- Yellow 1000 - 5000 $\mu\text{W}/\text{cm}^2$
- Red 5000 - 10000 $\mu\text{W}/\text{cm}^2$
- White > 10000 $\mu\text{W}/\text{cm}^2$



2 - LED Array at 15"



UVA 100D

UVA-125/UVA-125 AC

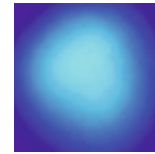


Technical Specifications

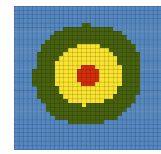
Light Source	: 3 UV-A LED
Max UVA Intensity with filter at a distance of 38cm(15")	: 7000 $\mu\text{W}/\text{cm}^2$
White Light Emission in UV mode	: <10 Lux (0.92 fc)
Wavelength (Peak)	: 365 nm \pm 5 nm
Max Beam Coverage Area	: \varnothing 180mm (\varnothing 7")
Power Requirement	: 100V - 240V, 50-60Hz
Battery Run Time#	: 5-6 Hours
Battery Charge Time#	: 2.5 Hours
Housing Material	: Powder Coated Aluminium
Housing Dimension(LXD)	: 220x \varnothing 110 (8.6"x \varnothing 4.3")
Approximate Weight	
• (Battery Model)	: 2.20lbs (1.00Kg)
• (AC Mains)	: 2.09lbs (0.95Kg)
Power Rating	: 6 watt
IP Rating	: 63

Beam Irradiance Pattern & Profile

- Blue <200 $\mu\text{W}/\text{cm}^2$
- Green 200 - 1000 $\mu\text{W}/\text{cm}^2$
- Yellow 1000 - 5000 $\mu\text{W}/\text{cm}^2$
- Red 5000 - 10000 $\mu\text{W}/\text{cm}^2$
- White > 10000 $\mu\text{W}/\text{cm}^2$



3 - LED Array at 15"



AUL 125

UVA-150/UVA-150 AC



Technical Specifications

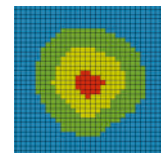
Light Source	: 4 UVA LED
Max UV-A Intensity with filter at a distance of 38cm(15")	: 9000 $\mu\text{W}/\text{cm}^2$
White Light Emission in UV mode	: <10 Lux (0.92 fc)
Wavelength (Peak)	: 365 nm \pm 5 nm
Max Beam Coverage Area	: \varnothing 200mm (\varnothing 8")
Power Requirement	: 100V - 240V, 50-60Hz
Battery Run Time#	: 4-5 Hours
Battery Charge Time#	: 2.5 Hours
Housing Material	: Powder Coated Aluminium
Housing Dimension(LXD)	: 220x \varnothing 110 (8.6"x \varnothing 4.3")
Approximate Weight	
• (Battery Model)	: 2.20lbs (1.00Kg)
• (AC Mains)	: 2.09lbs (0.95Kg)
Power Rating	: 8 watt
IP Rating	: 63

Beam Irradiance Pattern & Profile

- Blue <200 $\mu\text{W}/\text{cm}^2$
- Green 200 - 1000 $\mu\text{W}/\text{cm}^2$
- Yellow 1000 - 5000 $\mu\text{W}/\text{cm}^2$
- Red 5000 - 10000 $\mu\text{W}/\text{cm}^2$
- White > 10000 $\mu\text{W}/\text{cm}^2$



4 - LED Array at 15"



UVA 150



UVA-100

UVA-100D

UVA-125

UVA-150

Order Part No.:	2 UVA LED	2 UVA LED + 1 White LED	3 UVA LED	4 UVA LED
Internal Battery	UVA 100	UVA 100D	UVA 125	UVA 150
AC Mains	UVA 100 AC	UVA 100D AC	UVA 125 AC	UVA 150 AC

Kit Contains :

- LED UV Lamp
- Neck Strap
- Battery Charger with Power Cord (in Battery Models)
- External Batteries in EB Model
- Operation Manual & Certificate of Conformity
- Soft Carry Case
- UVA protective glasses



Note:

- Kindly Specify the Plug Type
- Standard Warranty: 1 Year.