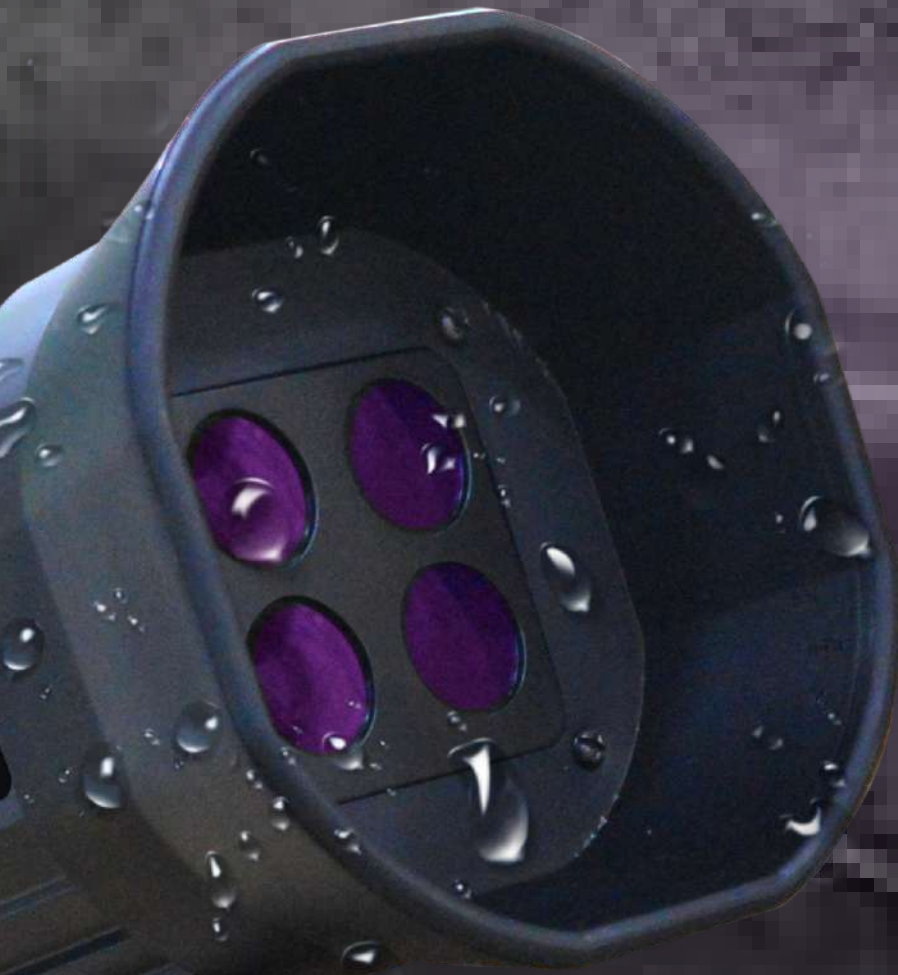


# LED UV Lamps



## Salient Features :

- Ergonomically Designed Robust Aluminium Housing
- Switchable between UV & White Light\*
- Instant on/off, No Warm-Up Time For Full Intensity
- LED's Life upto (40,000 Hrs)
- Mechanical Passive Cooling System
- Even Beam Profile Without Hotspots
- UVA Pass Filter
- Rechargeable Li-Ion Battery Pack
- One Year Standard Warranty.



**INSTANT ON/OFF  
OPERATION**  
No warm-up time  
for full intensity



**LED**  
LED's Life upto  
(40,000 Hrs)



**SAFER**  
Robust  
aluminium design



**COOLING SYSTEM**  
Mechanical Passive  
Cooling System

The UVA lamp series is a Hand-Held UV lamp used for fluorescent non-destructive testing applications like fluorescent penetrant testing and fluorescent magnetic particle inspections. The features includes a switch from AC to Battery operated, UVA pass filter, custom-designed optics which provides intense even spread of UVA, to easily identify indications and long-lasting LED'S life with no warmup time at full intensity. The UVA lamp series is certified as per NDT standards ASTM E1444 and ASTM E3022.

## UVA-100/UVA-100 AC



### Technical Specifications

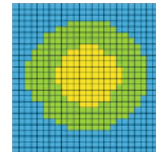
|   |   |
|---|---|
| Light Source  | : 2 UVA LED   |
| Max UV-A Intensity with filter at a distance of 38cm(15") | : 5000 $\mu\text{W}/\text{cm}^2$                    |
| White Light Emission in UV mode                           | : <10 Lux (0.92 fc)                                 |
| Wavelength (Peak)   | : 365 nm $\pm$ 5 nm                                 |
| Max Beam Coverage Area                                    | : $\varnothing$ 150mm ( $\varnothing$ 6")           |
| Power Requirement   | : 100V - 240V, 50-60Hz                              |
| Battery Run Time#   | : 6-7 Hours   |
| Battery Charge Time#                                      | : 2.5 Hours   |
| Housing Material  | : Powder Coated Aluminium                           |
| Housing Dimension(LXD)                                    | : 220x $\varnothing$ 110 (8.6"x $\varnothing$ 4.3") |
| Approximate Weight  |   |
| • (Battery Model)   | : 1.98lbs (0.90Kg)                                  |
| • (AC Mains)  | : 1.87lbs (0.85Kg)                                  |
| Power Rating  | : 4 watt  |
| IP Rating   | : 63  |

### Beam Irradiance Pattern & Profile

- Blue <200  $\mu\text{W}/\text{cm}^2$
- Green 200 - 1000  $\mu\text{W}/\text{cm}^2$
- Yellow 1000 - 5000  $\mu\text{W}/\text{cm}^2$
- Red 5000 - 10000  $\mu\text{W}/\text{cm}^2$
- White > 10000  $\mu\text{W}/\text{cm}^2$



2 - LED Array at 15"



UVA 100

## UVA-100D/UVA-100D AC



### Technical Specifications

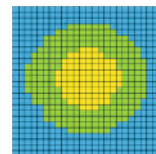
|   |   |
|---|---|
| Light Source  | : 2 UVA LED+1 White LED                             |
| Max UV-A Intensity with filter at a distance of 38cm(15") | : 5000 $\mu\text{W}/\text{cm}^2$                    |
| White Light Intensity                                     | : >3500 Lux/>325 ft-candle                          |
| White Light Emission in UV mode                           | : <10 Lux (0.92 fc)                                 |
| Wavelength (Peak)   | : 365 nm $\pm$ 5 nm                                 |
| Max Beam Coverage Area                                    | : $\varnothing$ 150mm ( $\varnothing$ 6")           |
| Power Requirement   | : 100V - 240V, 50-60Hz                              |
| Battery Run Time#   | : 6-7 Hours   |
| Battery Charge Time#                                      | : 2.5 Hours   |
| Housing Material  | : Powder Coated Aluminium                           |
| Housing Dimension(LXD)                                    | : 220x $\varnothing$ 110 (8.6"x $\varnothing$ 4.3") |
| Approximate Weight  |   |
| • (Battery Model)   | : 2.09lbs (0.95Kg)                                  |
| • (AC Mains)  | : 1.98lbs (0.90Kg)                                  |
| Power Rating  | : 4 watt  |
| IP Rating   | : 63  |

### Beam Irradiance Pattern & Profile

- Blue <200  $\mu\text{W}/\text{cm}^2$
- Green 200 - 1000  $\mu\text{W}/\text{cm}^2$
- Yellow 1000 - 5000  $\mu\text{W}/\text{cm}^2$
- Red 5000 - 10000  $\mu\text{W}/\text{cm}^2$
- White > 10000  $\mu\text{W}/\text{cm}^2$



2 - LED Array at 15"



UVA 100D

## UVA-125/UVA-125 AC

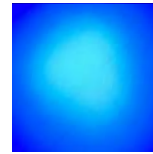


### Technical Specifications

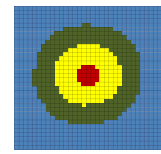
|  |   |
|--|---|
| Light Source   | : 3 UV-A LED  |
| Max UVA Intensity with filter at a distance of 38cm(15") | : 7000 $\mu\text{W}/\text{cm}^2$                    |
| White Light Emission in UV mode                          | : <10 Lux (0.92 fc)                                 |
| Wavelength (Peak)  | : 365 nm $\pm$ 5 nm                                 |
| Max Beam Coverage Area                                   | : $\varnothing$ 180mm ( $\varnothing$ 7")           |
| Power Requirement  | : 100V - 240V, 50-60Hz                              |
| Battery Run Time#  | : 5-6 Hours   |
| Battery Charge Time#                                     | : 2.5 Hours   |
| Housing Material   | : Powder Coated Aluminium                           |
| Housing Dimension(LXD)                                   | : 220x $\varnothing$ 110 (8.6"x $\varnothing$ 4.3") |
| Approximate Weight                                       |   |
| • (Battery Model)  | : 2.20lbs (1.00Kg)                                  |
| • (AC Mains)   | : 2.09lbs (0.95Kg)                                  |
| Power Rating   | : 6 watt  |
| IP Rating  | : 63  |

### Beam Irradiance Pattern & Profile

- Blue <200  $\mu\text{W}/\text{cm}^2$
- Green 200 - 1000  $\mu\text{W}/\text{cm}^2$
- Yellow 1000 - 5000  $\mu\text{W}/\text{cm}^2$
- Red 5000 - 10000  $\mu\text{W}/\text{cm}^2$
- White > 10000  $\mu\text{W}/\text{cm}^2$



3 - LED Array at 15"



AUL 125

Scale 0.5"x0.5"

## UVA-150/UVA-150 AC



### Technical Specifications

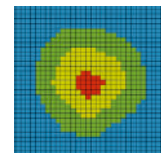
|   |   |
|---|---|
| Light Source  | : 4 UVA LED   |
| Max UV-A Intensity with filter at a distance of 38cm(15") | : 9000 $\mu\text{W}/\text{cm}^2$                    |
| White Light Emission in UV mode                           | : <10 Lux (0.92 fc)                                 |
| Wavelength (Peak)   | : 365 nm $\pm$ 5 nm                                 |
| Max Beam Coverage Area                                    | : $\varnothing$ 200mm ( $\varnothing$ 8")           |
| Power Requirement   | : 100V - 240V, 50-60Hz                              |
| Battery Run Time#   | : 4-5 Hours   |
| Battery Charge Time#                                      | : 2.5 Hours   |
| Housing Material  | : Powder Coated Aluminium                           |
| Housing Dimension(LXD)                                    | : 220x $\varnothing$ 110 (8.6"x $\varnothing$ 4.3") |
| Approximate Weight  |   |
| • (Battery Model)   | : 2.20lbs (1.00Kg)                                  |
| • (AC Mains)  | : 2.09lbs (0.95Kg)                                  |
| Power Rating  | : 8 watt  |
| IP Rating   | : 63  |

### Beam Irradiance Pattern & Profile

- Blue <200  $\mu\text{W}/\text{cm}^2$
- Green 200 - 1000  $\mu\text{W}/\text{cm}^2$
- Yellow 1000 - 5000  $\mu\text{W}/\text{cm}^2$
- Red 5000 - 10000  $\mu\text{W}/\text{cm}^2$
- White > 10000  $\mu\text{W}/\text{cm}^2$



4 - LED Array at 15"



UVA 150

Scale 0.5"x0.5"



**UVA-100**

**UVA-100D**

**UVA-125**

**UVA-150**

| Order Part No.:         | 2 UVA LED  | 2 UVA LED + 1 White LED | 3 UVA LED  | 4 UVA LED  |
|-------------------------|------------|-------------------------|------------|------------|
| <b>Internal Battery</b> | UVA 100    | UVA 100D                | UVA 125    | UVA 150    |
| <b>AC Mains</b>         | UVA 100 AC | UVA 100D AC             | UVA 125 AC | UVA 150 AC |

**Kit Contains :**

- LED UV Lamp
- Neck Strap
- Battery Charger with Power Cord (in Battery Models)
- External Batteries in EB Model
- Operation Manual & Certificate of Conformity
- Soft Carry Case
- UVA protective glasses



**Note:**

- Kindly Specify the Plug Type
- Standard Warranty: 1 Year.