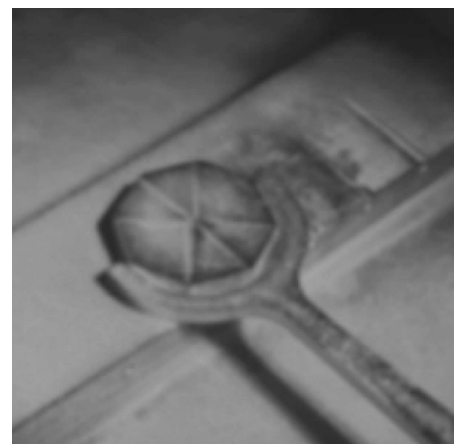
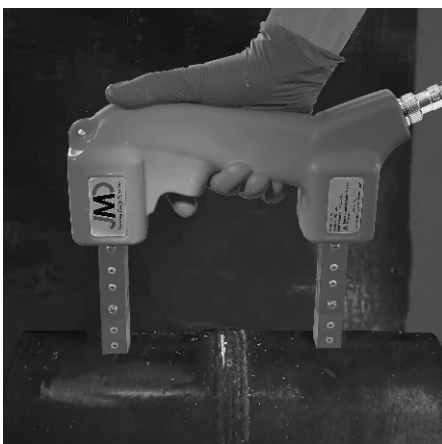




NDT EQUIPMENTS & ACCESSORIES



UVA SERIES LED UV PRODUCTS

The UVA lamp series is a Hand-Held UV lamp used for fluorescent non-destructive testing applications like fluorescent penetrant testing and fluorescent magnetic particle inspections. The features include a switch from AC to Battery operated, UVA pass filter, custom-designed optics which provides intense even spread of UVA, to easily identify indications and long-lasting LED's life with no warmup time at full intensity. The UVA lamp series is certified as per NDT standards ASTM E1444 and ASTM E3022.

Hand Held Lamps

Salient Features :

- Ergonomically Designed Robust Aluminium Housing
- Switchable between UV & White Light*
- Instant on/off, No Warm-Up Time For Full Intensity
- LED's Life upto (40,000 Hrs)
- Mechanical Passive Cooling System
- Even Beam Profile Without Hotspots
- UVA Pass Filter
- Rechargeable Li-Ion Battery Pack
- One Year Standard Warranty.



UVA90 LED UV Torch of JMD is designed and manufactured as lightweight, compact, long life, high durability solution used for UV inspection techniques. The On/Off button is positioned in the back of the torch to prevent accidental activation. At full charge the battery provides approximately 5 hours of constant use. It can be used at the lowest possible distance because of its uniform intensity with no Hotspot, It is manufactured in accordance with ASTM E1444 and E3022 standards.



LED UV Torch

Salient Features :

- Ergonomically Designed Robust Aluminum Housing
- Instant On/Off, No Warm-Up Time For Full Intensity
- Long Lasting LED's life (40,000 Hrs.)
- Even Beam Profile Without Hotspot
- UVA Pass Filter
- Rechargeable Li-Ion Battery

The UVA-150B is a UV Bulb which is used for fluorescent non-destructive testing applications like fluorescent penetrant testing and fluorescent magnetic particle inspections. It perfectly replaces the conventional mercury vapor bulb. The most unique feature of UVA-150B is that it comes with standard E27 holder wherein the operator just needs to unplug the conventional mercury vapor bulb and plugin the UVA-150B and he/she is ready for inspection. The UVA-150B is certified as per NDT standards ASTM E1444 and ASTM E3022.



LED UV Bulb

Salient Features :

- Replaces conventional mercury vapor bulb
- Long lasting LED's life (40,000 hrs)
- Instant On/Off, no warm-up time for full intensity
- Less fragile than conventional mercury vapor HID bulb
- Cooler than mercury vapor HID bulb with active cooling
- UVA pass filter

JMD designs and manufactures UVA series of LED flood lamps wherein each lamp features a panel of LED's, specially engineered for non-destructive testing applications. These versatile, stationary light sources can be installed overhead or in-line and can be connected to provide an even wider coverage area. The lamps produce a nominal steady-state UVA intensity of $6,500 \mu\text{W}/\text{cm}^2$ at 15 inches (38 cm) which is ideal for NDT inspection booths, fluorescent penetrant magnetic particle inspection, screening of fluorescent particles, wash station inspection and many other applications that require maximum uniformity of UVA coverage over a large area. A certificate of conformance is supplied with each unit.

LED UV Flood Lamps

Salient Features :

- Robust aluminium housing
- Switchable between UV & white light
- Electronic intensity control
- Long lasting LED's life (40,000 Hrs)
- Mechanical active cooling system with fans
- Even beam profile without hotspot
- UVA pass filter





CUSTOMIZED LED UV FLOOD LAMP

JMD manufactures a complete customized solution for UVA LED flood lamps wherein each lamp features a panel of LEDs specially engineered for non-destructive testing applications. These versatile light sources can be installed overhead or in-line. It can be connected with different size flood lamps to provide an even wider coverage area for complete inspection. The lamps can also be customized with the number of LED inputs to produce nominal steady-state UV-A intensity at entire area of inspection. This feature will be ideal for NDT inspection booths, fluorescent magnetic particle inspection, screening of fluorescent particles, wash station inspection and many other applications that require maximum uniformity of UV-A coverage over a large area.

Salient Features :

- Robust aluminium housing
- Switchable between UV & white light
- Electronic intensity control
- Long lasting LED's life (40,000 Hrs)
- Mechanical active cooling system with fans
- Even beam profile without hotspot
- UVA pass filter
- Inter connected with each other

YOKES

The JY-7A Yoke is a powerful AC magnetic yoke used for detection of cracks on surface during magnetic particle inspection. It is portable, lightweight and has detachable power cords for efficient use. The yoke is chemical, oil and abrasion resistant and have articulated legs which can spread approx (60-270mm). The yokes can be used with dry or wet method and can be applied with continuous magnetic fields. The design allows the operator an excellent grip in a variety of testing conditions and reduces stress on the operator's hand. It is manufactured as per ASTM E1444 & E709 standards.



AC Magnetic Yoke

Salient Features :

- Accessible grip, angled body for better position
- Powerful AC magnetic field
- As per ASTM E709 & ASTM E1444 standards
- Durable rugged construction
- Adjustable leg spacing
- Detachable power cord

JMD designs and manufactures 2 models in the M5-Series Fixed Type JY-M5-F and Wire Type JY-M5-W. The yokes are equipped with 360° rotating contact feet, which easily permits the operator to maximize the contact area between the pole piece and the work piece. These yoke magnets are ideal for effective magnetization of components for crack detection, particularly where in the use of electromagnetic yokes is impracticable or prohibited for safety reason. The permanent magnet yokes offer complete portability due to no requirement of electricity. All M5-Series yokes are manufactured as per ASTM E1444 and E709 standards and are delivered with a Certificate of conformance.

Permanent Yokes

Salient Features :

- Durable, light weight & compact
- No recharging required
- Completely Portable
- Hinged frame and cable type
- Suitable for both Dry & Wet applications

Permanent Magnetic Yoke



Wire Type Yoke



METERS

KEN-365 is a battery powered UVA meter which is used for measuring UVA irradiation and visible illumination. The UVA meter provides fast measurement as it offers auto ranging and concurrent measuring of visible light and UVA irradiation. It is ergonomically designed, easy to use, light weight, wired sensor unit and compact in size. The Sensor unit has both the UV and White light sensors incorporated on it the UV sensor comes with a UVA pass filter which passes only UVA wavelength and blocks other wavelength. The unit also includes digital white light sensor with visible light pass filter which passes wave length between 460–690 nm visible wavelength only. The meter shows the present value measured and stores the highest peak value measured.

UVA Intensity Meter

Salient Features :

- Large, easy to read and colour fusion LCD screen display
- Compact & light weight
- Comes with complete rechargeable Li-ion battery and padded carrying case
- One Touch On/Off for power save
- 6 hours of battery back up in single charge
- Able to measure both UVA and Visible illuminance
- Visible light measurement in LUX as well as in Foot-Candle



JMD Pantometer is a densitometer which is a battery-operated handheld unit used for measuring the transmitted density of X Ray film. The Pantometer has a white illumination range of 10,000cd/m² to 50,000cd/m² and has been calibrated to achieve optimum accuracy and stability for reading density. The battery can be charged with a standard USB charger which ensures an operating time up to 10 hrs. It is manufactured as per ASTM E1079 standards.

Densitometer

Salient Features :

- Big and colorful LCD screen display
- Compact & light weight
- Rechargeable Li-Ion battery
- 8 hours of battery back up in single charge
- Auto shut down for power saving mode





| Radiography Testing

The Apollo series LED film viewers are designed and manufactured for high-end NDT X-ray film evaluation. A durable economically designed structure made of corrosion resistant aluminium body contains latest series of power LED's giving magnificent white light over whole control range. The higher contrast helps inspection personal to find defects and discontinuities easily without causing eyestrain. The efficiency of LED's is much higher than Halogen lamps because they create only 'cold' light without heat radiation. A speed-controlled cooling fan reduces noise, and a large variety of accessories makes handling of films very simple. High illuminance makes it possible to view very dark films by not damaging the quality of the film. It is manufactured according to ASTM E1390 and a certificate of conformance is provided with every unit.

LED Film Viewers

Salient Features :

- High power SMD LED's
- Built-in writing lamp (Apollo 412 & Apollo 4517)
- Viewing screen adjustable shutters
- Electronic brightness control & foot switch control
- Corrosion resistant AL body
- Manufactured as per ASTM E1390



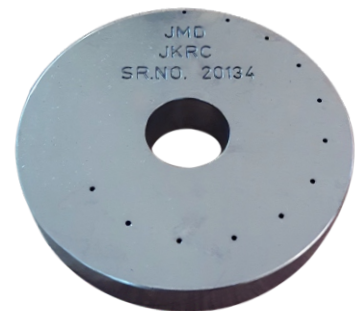
MPI ACCESSORIES

Ketos Ring is intended to be a total system check for your DC output equipment. This test gauge with subsurface discontinuities is an excellent tool that provides a quick way to confirm overall performance of your DC output machine. The Ketos Ring is meant to be a quick overall system performance indicator. The ring is to be processed by the continuous method using a 1-inch diameter central conductor.

Ketos Ring

Salient Features :

- Can be tested with dry & wet methods.
- Manufactured as per tool steel for better durability
- Can be cleaned with acetone or cleaning solvent for better results
- Used only for AC magnetic field
- As per standard EI444

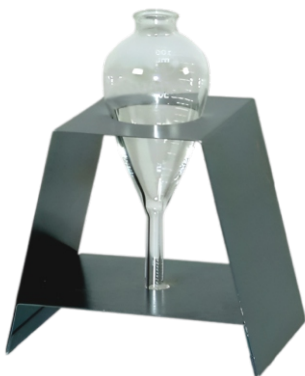


Centrifugal tube is used for the determination of content of solid particles in inspection medium for magnetic particle examination. The concentration of particles in the suspension is a very important parameter in the inspection process and must be closely controlled. The lines on centrifugal tube is to help you easily and accurately measure the magnetic bath concentration. The particle concentration is checked after the suspension is prepared and regularly monitored as part of the quality system checks. Generally, concentration checks are performed every eight hours or at every shift change. However the procedure and parameters of the settling test is set out in ASTM E1444 & E709

Centrifugal Tube

Salient Features :

- Easy and accurate measurement
- All our tubes are individually calibrated
- Monitor contamination level of the bath
- We have different least count centrifugal tubes for visible & fluorescent
- We also provide centrifugal tubes with least count of 0.05 ml & 0.1 ml.



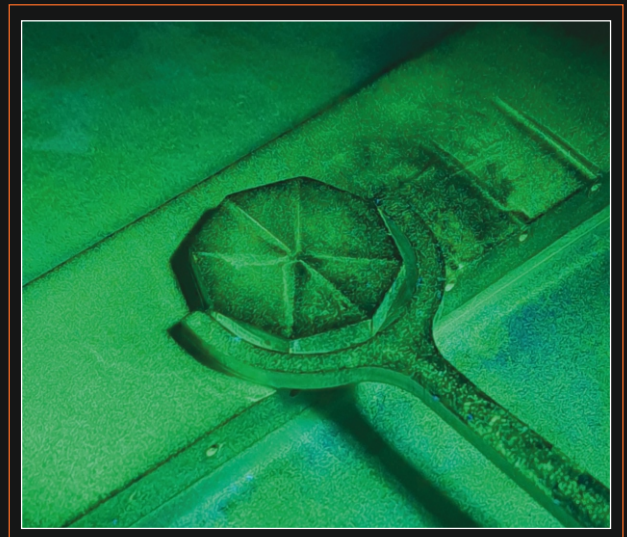


PIE GAUGE

The pie gauge is a disk of highly permeable material divided into eight sections by non-ferromagnetic material. The joining's of section act as artificial defects that radiate out in different directions from the centre. The sections are furnace brazed and copper plated. The advantage of pie gauge is that it is easy to use, and it can be used indefinitely without deterioration.

Salient Features :

- Operation - easy to use without deteriorating
- Copper plated - corrosion resistance and durability
- Eight linear discontinuities - covers all direction containing magnetic flux
- Non-ferrous handle
- As per ASTM E709 & E1444 standards.



The success of Radiography in Non-Destructive Testing (NDT) not only lies in the inspection, but also on the interpretation of radiographs. The correct interpretation can only be done if the operator uses the Film Viewer which is manufactured and operated as per International standards and keeping the industrial requirement in mind.

Lead Screens

Salient Features :

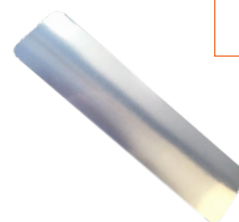
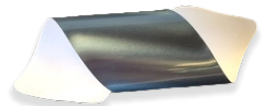
- Instant on/off, No warm up time at full intensity.
- LED's life up to (40,000 hrs.)
- UV-A pass filter
- Even beam profile without hotspot
- Ergonomically designed robust aluminium housing. *(Lamp/Torch)



Standard Sizes

Thickness	Inches	Inches
(0.1/0.1)	3.5"X17"	5cmX40cm
(0.125/0.125)	4.5"X10"	6cmX40cm
(0.15/0.15)	4.5"X17"	7cmX48cm
(0.25/0.25)	7"X17"	10cmX24cm
(0.027/0.027)	8"X10"	10cmX40cm
(0.15/0.20)	10"X12"	15cmX40cm
(1.00/1.00)	12"X15"	30cmX40cm
(0.05/0.05)	14"X17"	35cmX43cm

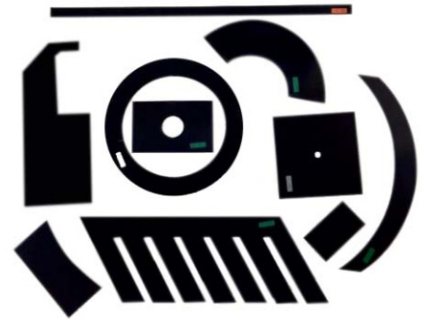
*Customized sizes are available.



RADAC ACCESSORIES



Lead Intensifying Rolls



Ready to Use Cassettes with Film



Cassettes (X Ray Film Holders)



Sharp Faced Flat Faced

Lead Identification Markers



Copper Intensifying Screens



Double Envelope Cassettes



ABOUT US

JMD NDT is founded to offer Reliable NDT Products & Accessories to US & Global markets. Its objective is to offer quality products & accessories at the right price and is committed to customer satisfaction...

We also distribute Radiographic Accessories Limited, UK products in USA.



450 Century Parkway, Suite# 250 Allen, Texas 75013, USA