

LED UV Lamps

Salient Features

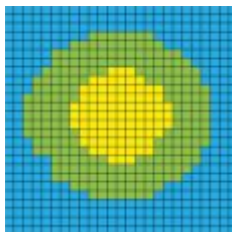
- Ergonomically designed robust housing
- Long lasting LED's (40000 hrs) life
- Instant ON/OFF, no warm-up time for full intensity
- Mechanical cooling system with no internal fan
- Rechargeable external Li-Ion battery pack for field applications
- Even beam profile without Hotspot
- UV-A pass filter



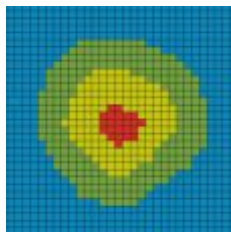
Technical Specifications

	UVA-100	UVA-100D	UVA-150
Light Source	2 UV-A LED	2 UV-A & 1 White LED	4 UV-A LED
Max UV-A Intensity with filter at a distance of 15"	4,500 $\mu\text{W}/\text{cm}^2$	4,500 $\mu\text{W}/\text{cm}^2$	7,000 $\mu\text{W}/\text{cm}^2$
White Light Emission in UV mode	<1 ft-candle/10 Lux	<1 ft-candle/10 Lux	<1 ft-candle/10 Lux
LED Peak Wavelength	365 nm \pm 5 nm	365 nm \pm 5 nm	365 nm \pm 5 nm
Max Beam Coverage Area	\varnothing 150 mm	\varnothing 150 mm	\varnothing 200 mm
Power Requirement	90-270VAC, 50-60Hz	90-270VAC, 50-60Hz	90-270VAC, 50-60Hz
white light intensity	NA	325ft-candle/3,500 LUX	NA
Battery Run Time	7 - 8 Hours	7 - 8 Hours	4 - 5 Hours
Charge Time	2 Hour	2 Hours	2 Hours
Housing Material	Anodized Aluminium	Anodized Aluminium	Anodized Aluminium
Housing Dimensions (mm)	220 x \varnothing 110 (LxD)	220 x \varnothing 110 (LxD)	220 x \varnothing 110 (LxD)
Weight	1.76lb (0.8Kg)	1.76lb (0.8Kg)	1.76lb (0.8Kg)

Beam Irradiance Pattern & Profile



UVA 100/100D

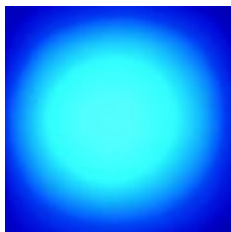


UVA 150

Scale 0.5"x0.5"



2 - LED Array at 15"



4 - LED Array at 15"

Blue <200 $\mu\text{W}/\text{cm}^2$
 Green 200 - 1000 $\mu\text{W}/\text{cm}^2$
 Yellow 1000 - 5000 $\mu\text{W}/\text{cm}^2$
 Red 5000 - 10000 $\mu\text{W}/\text{cm}^2$
 White > 10000 $\mu\text{W}/\text{cm}^2$

Kit Contains

- UV Lamp
- Li-Ion Battery Pack
- Charger
- Operation Manual
- Certificate of Conformity
- Soft Carry Case

