

LED Film Viewers

- High Power LEDs
- Built-in Writing Lamp
- Electronic Brightness Control
- Corrosion Resistant Body
- Foot Switch Control
- As per ASTM 1390



Technical Specifications:

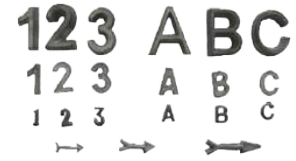
	LED FV-PCS	LED FV-PC	LED FV-BS	LED FV-FP
Viewing Area (L X W)	8.5" x 3.5" 216 mm x 90 mm	10" x 4" 250 mm x 100 mm	10" x 4" 250 mm x 100 mm	17" x 14" 430 mm x 360 mm
Film Density	Up to 4.0 D	Up to 4.5 D	Up to 4.5 D	Up to 3.8 D
Illumination	SMD LEDs	Power LEDs	Power LEDs	SMD LEDs
Input Voltage	110 - 277 VAC, 50~60 Hz	110 - 277 VAC, 50~60 Hz	110 - 277 VAC, 50~60 Hz	110 - 277 VAC, 50~60 Hz
Rated Output	35 Watt	98 Watt	105 Watt	180 Watt
Surface Temp.	<104° F (40° C)	<104° F (40° C)	<104° F (40° C)	<104° F (40° C)
Dimension (LxWxH)	16" x 6.5" x 3" 400mm x 165mm x 75mm	19.5" x 7" x 4" 490mm x 180mm x 100mm	22" x 9" x 8" 550mm x 220mm x 200mm	22" x 22" x 3.5" 550mm x 500mm x 90mm
Housing	Acrylic with piano finish	Acrylic with piano finish	Stainless Steel	Acrylic with piano finish
Max Brightness	≥ 80,000 cd/m ²	≥ 150,000 cd/m ²	≥ 250,000 cd/m ²	≥ 50,000 cd/m ²
Intensity Control	From 1%~100%	From 1%~100%	From 1%~100%	From 1%~100%
Cooling	High Capacity Fans & Aluminum Heat Sink	High Capacity Fans & Aluminum Heat Sink	High Capacity Fans & Aluminum Heat Sink	High Capacity Fans & Aluminum Heat Sink
Weight	≈ 125 OZ (3.5 Kg)	≈ 175 OZ (5 Kg)	≈ 390 OZ (11 Kg)	≈ 285 OZ (8 Kg)



Wire / Hole Type Penetrant Kits



PVC Cassettes



Lead Numbers & Letters



Lead Marker Tapes



Channel/Clip Type Film Hangers



Permanent Magnets



Radiation Warning Signs



Lead Screens



Warning Blinker with Siren



Cranking Unit



Guide / Extension Tube



Collimators



Lead Gloves



Spool



Densitometer

© Copyright 2016/10 by JMD NDT Inc. Specifications subject to change without notice.

JMD NDT Inc.

15 Corporate Place S, Suite 341A

Piscataway NJ 08854, USA

T: 908 444 6770 | E: info@jmdndt.com

W: www.jmdndt.com

